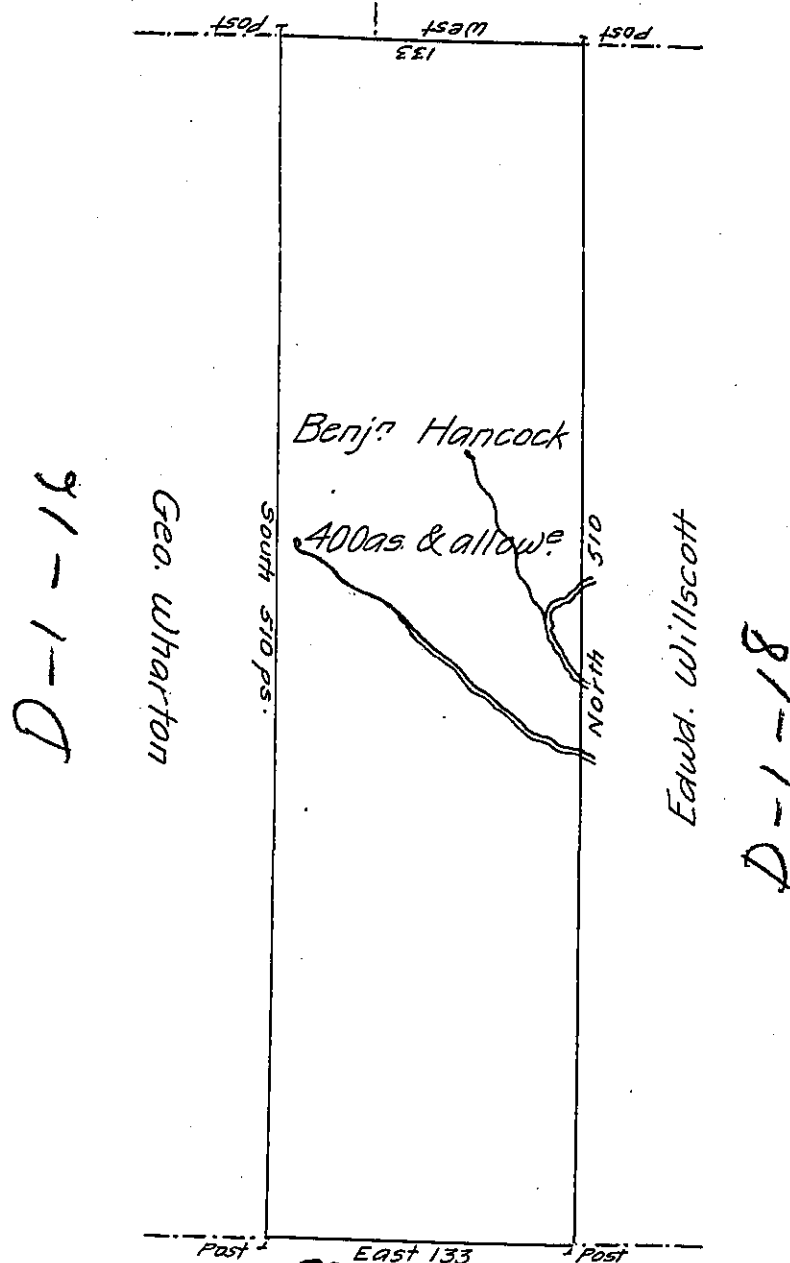


Wm. Thorne
Jas. Gamble



C-127-253
Stephen Madera

Draft of a tract of land called _____ Situate on the waters
 of Wyolusing Creek Joining Lands Surveyed for Edward Willscott & others
 in Northumberland County containing four Hundred Acres & allow^e of Six
 p.Cent. for roads &c. Surveyed for Benjamin Hancock the 16th. Day
 of Nour. 1784 in pursuance of a warrant dated the 6th. Day of July
 1784.

by

To John Lukens Esqr. }
 Survs. Genl. }

Wm. Gray D.S.

now Luzerne

IN TESTIMONY that the above is a copy of the original remaining on file in
 the Department of Internal Affairs of Pennsylvania, made
 conformably to an Act of Assembly approved the 16th day of
 February, 1833, I have hereunto set my Hand and caused
 the Seal of said Department to be affixed at Harrisburg,
 this first day of June 1905

George D. Brown
 Secretary of Internal Affairs.